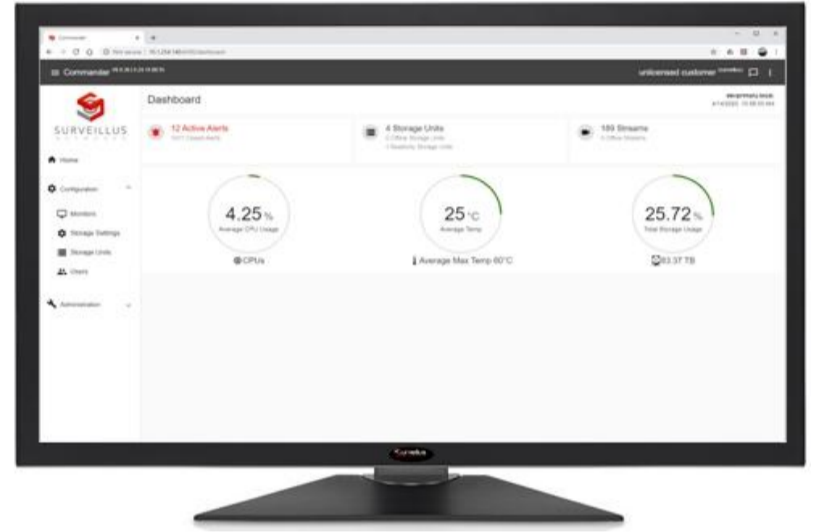




Commander System Management Application

OVERVIEW

The Surveillus Networks Commander browser-based application streamlines system installations and configuration. Allowing you to easily discover, add and configure system devices. This includes storage units, cameras, encoders, decoders, monitors and users. Commander greatly simplifies system maintenance and monitoring the health of all system devices. Commander allows users to monitor system hardware including: current firmware version, uptime, temperature, network speed, workload, stream counts, bit-rates, frame rates, storage rates, individual hard drive health status and other critical attributes.



FEATURES

- Browser based
- Full system management
- Discover & configure: system servers, storage units, Cameras, encoders, HD decoders, 3rd party keyboards, Sensors and SNMP devices
- User management controls
- Full audit reports and storage unit Summaries
- Centralized report management, real-time monitoring of system events, server health, storage unit health, stream health and sensor activity
- System maintenance utilities
- Video lock management
- Remote site management
- Storage groups management

